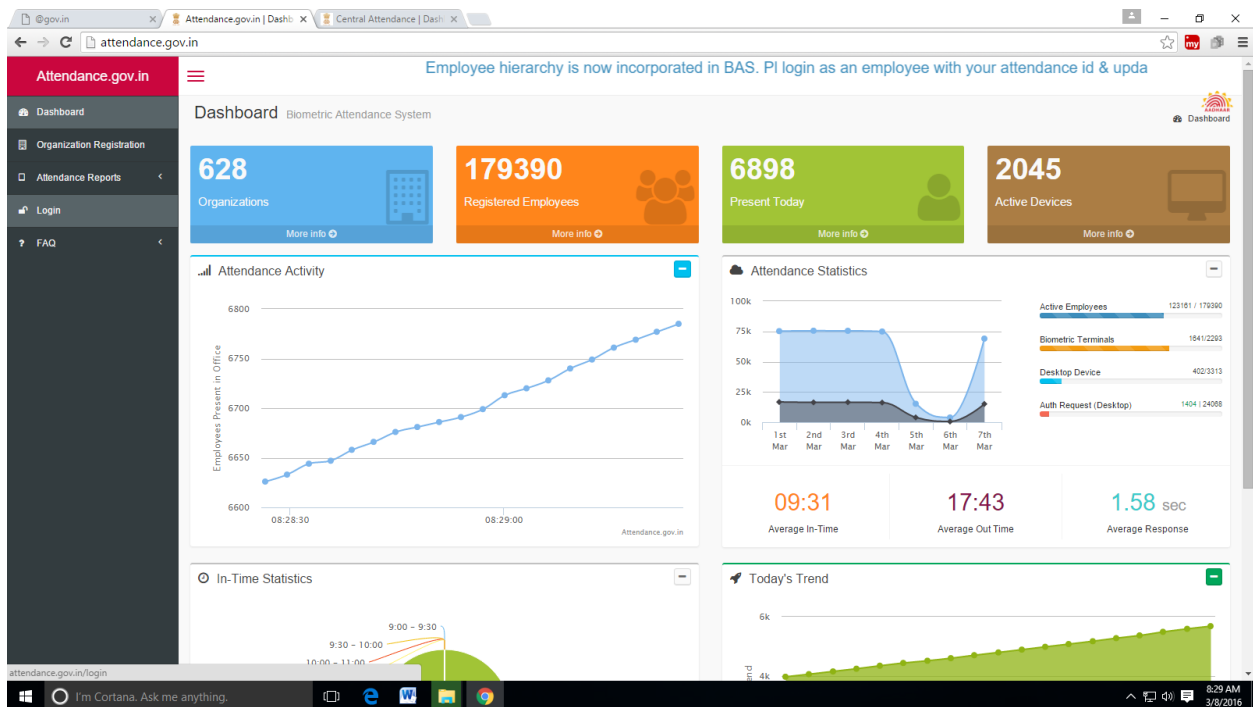


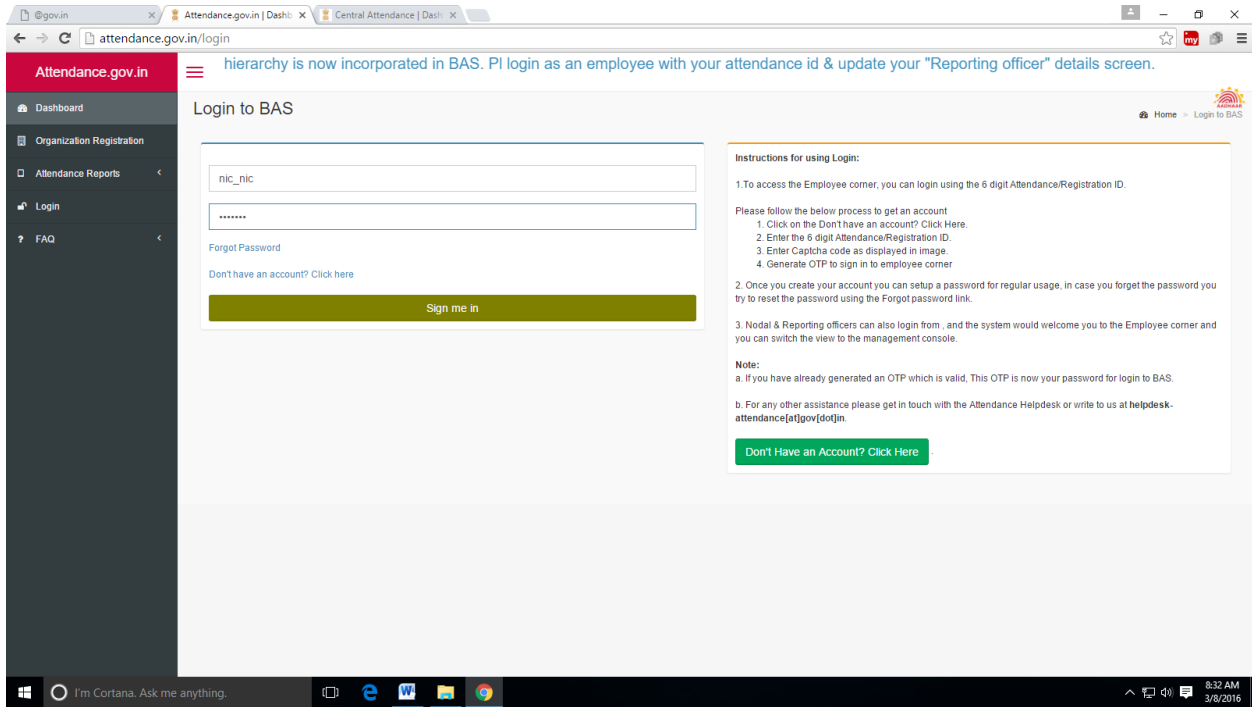
Biometric Attendance System: Windows Client Application Installation Guide

BAS Application Download:

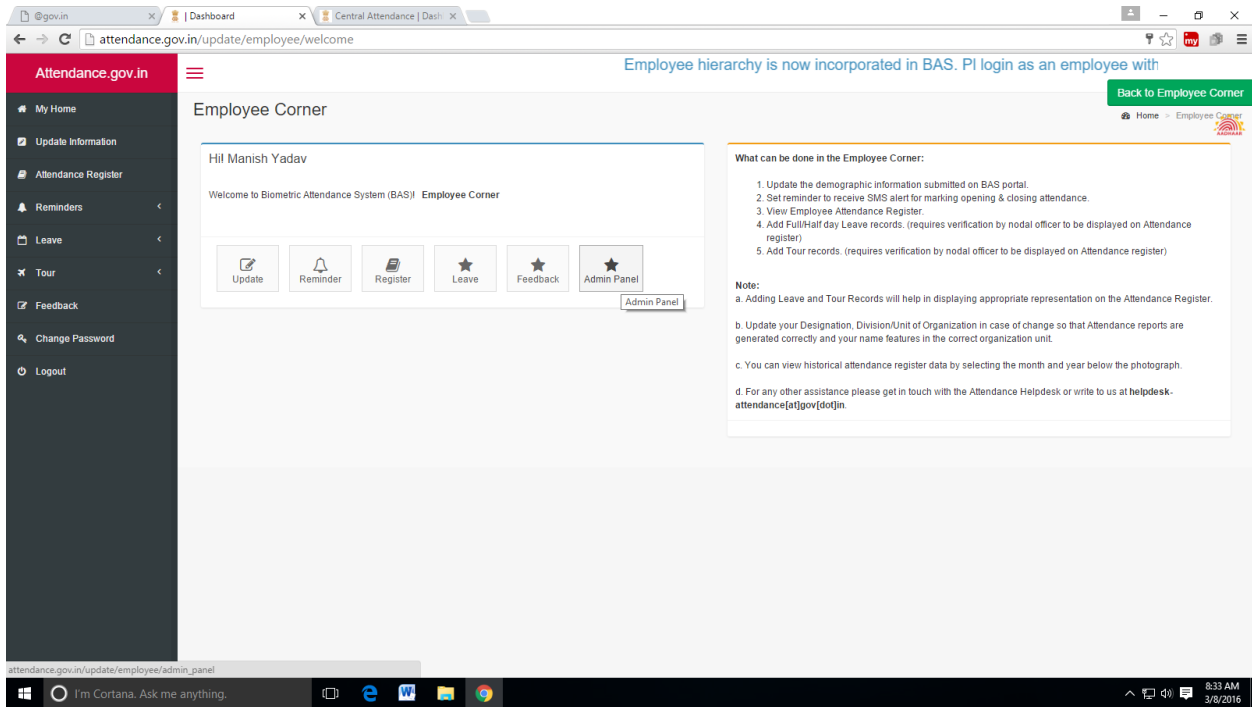
1. Go to your organization domain like- attendance.gov.in



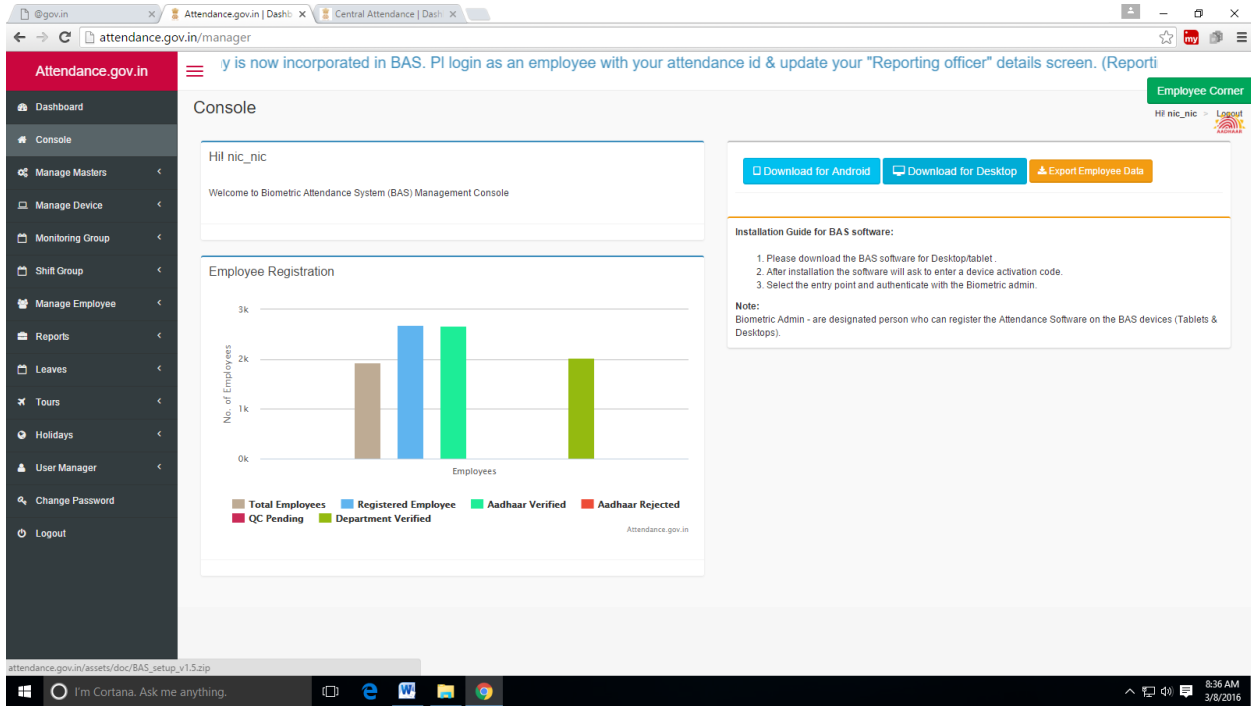
2. Now login in your organization portal with the username & password (Nodal officer of organization have Username & password)



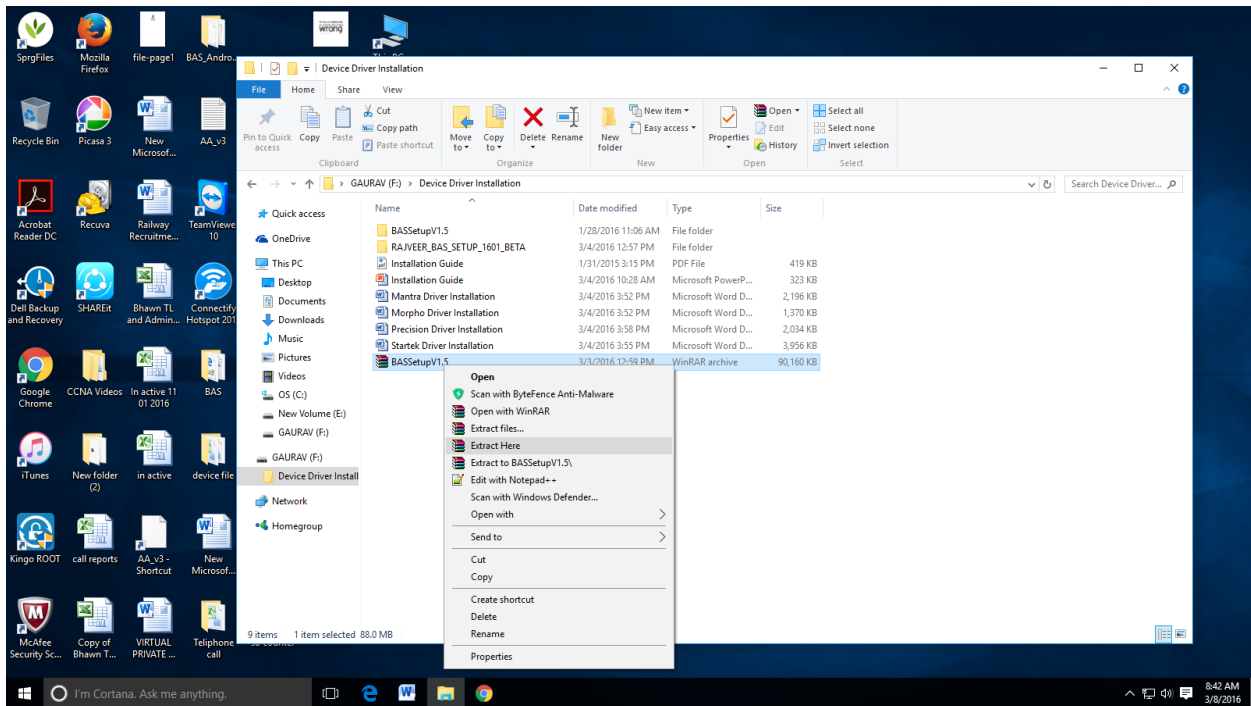
3. After login in attendance portal click on admin panel.



4. Now click on “Console”. In right hand side of your portal there is option of “Download of Android” & “Download for Desktop”.

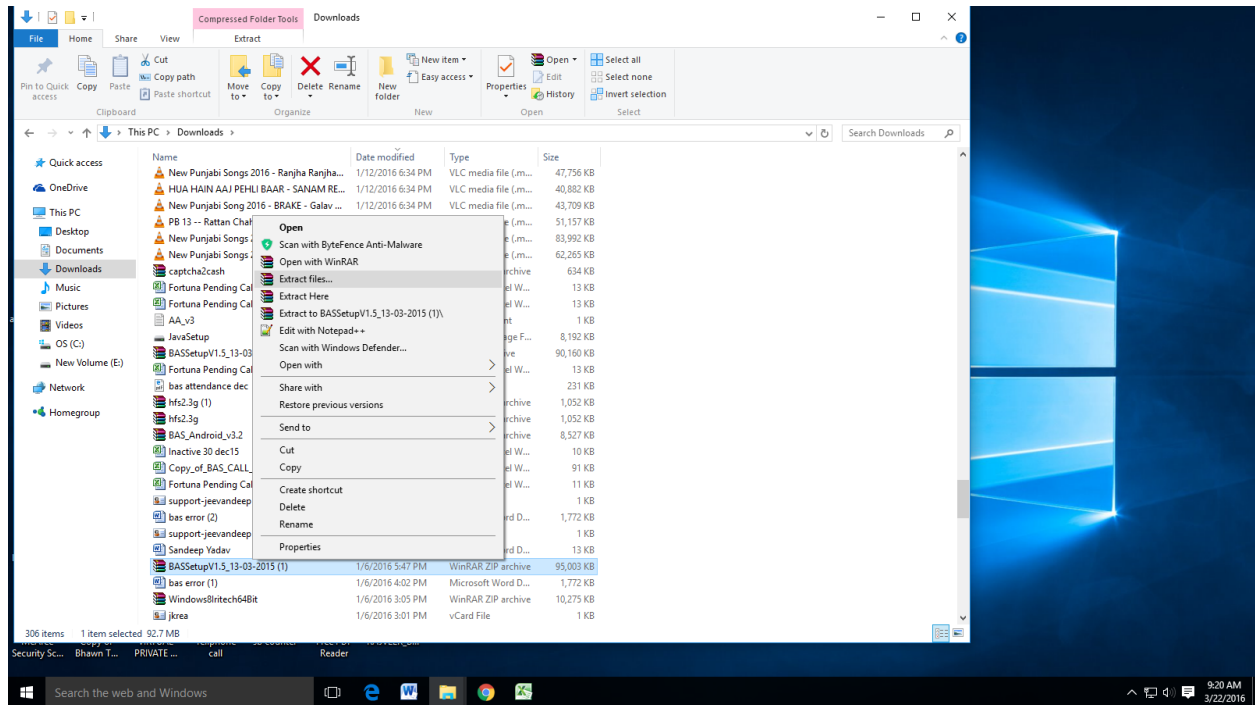


5. Now download the software for the desktop devices & Extract it before the installation.

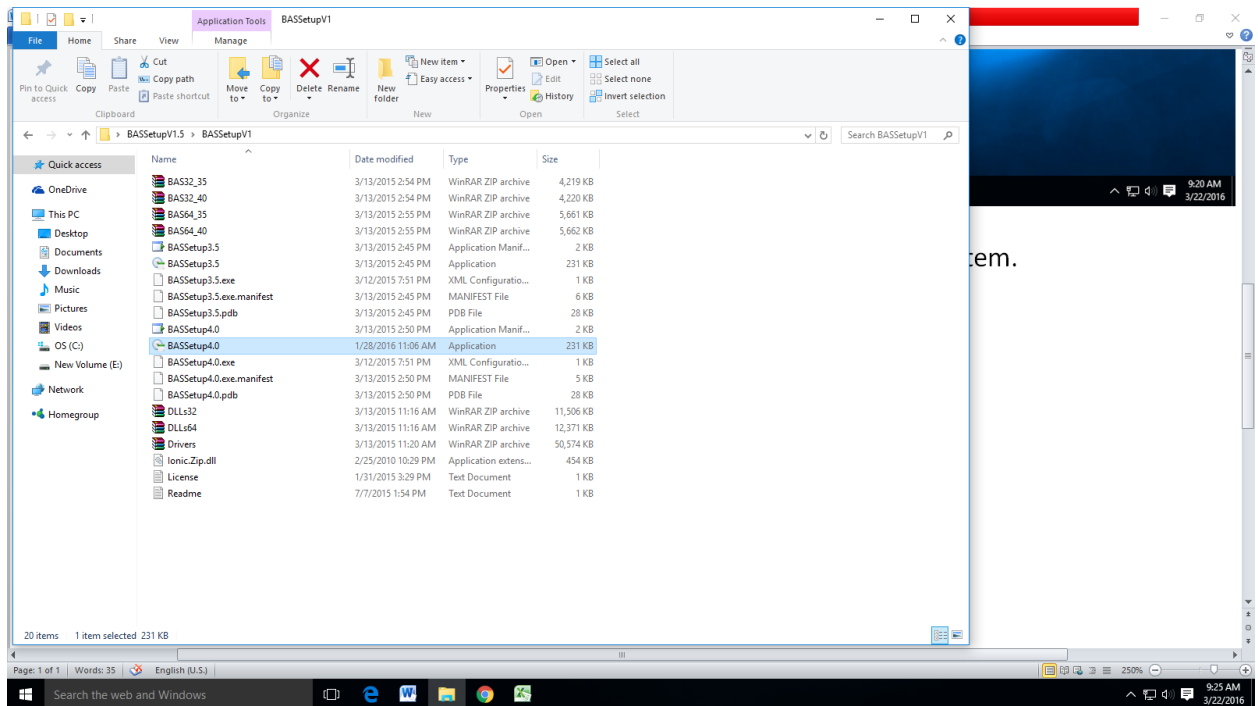


BAS Application Installation

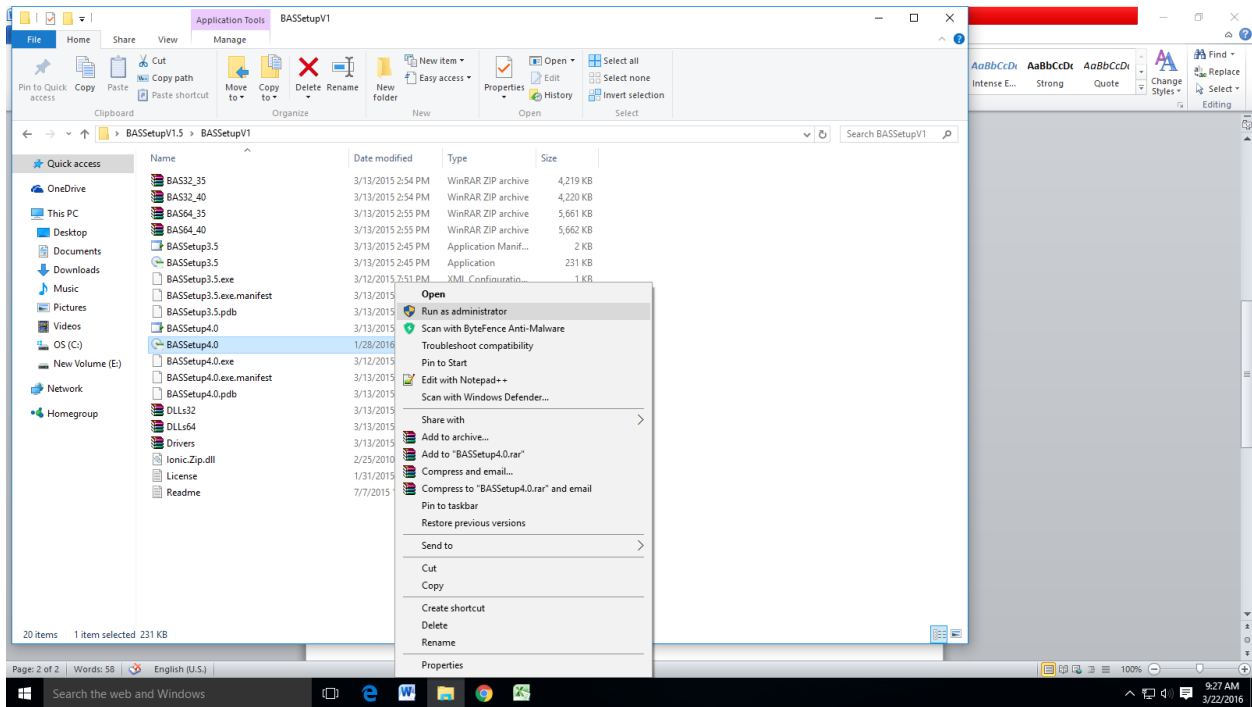
1. Extract the downloaded software file.



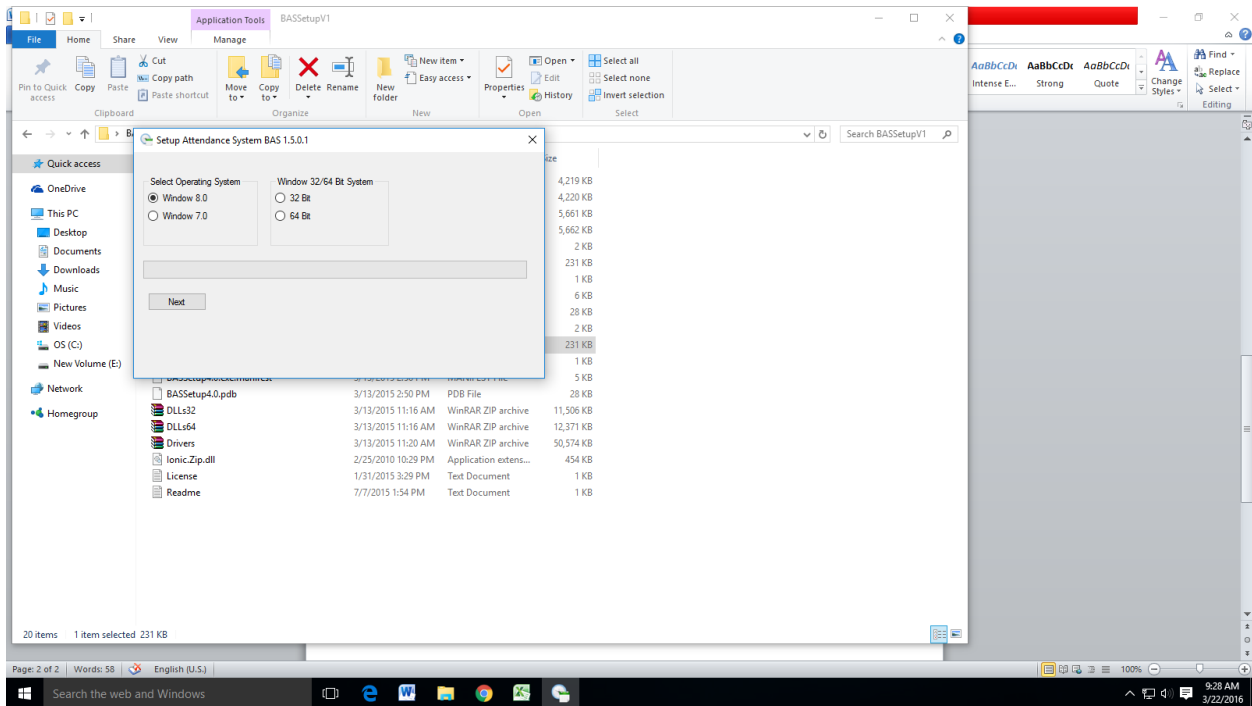
2. Now choose the Application file according to the window & operating system.
BASSetup 3.5 for Window 7 ORBASSetup 4.0 for Window 8 & above.



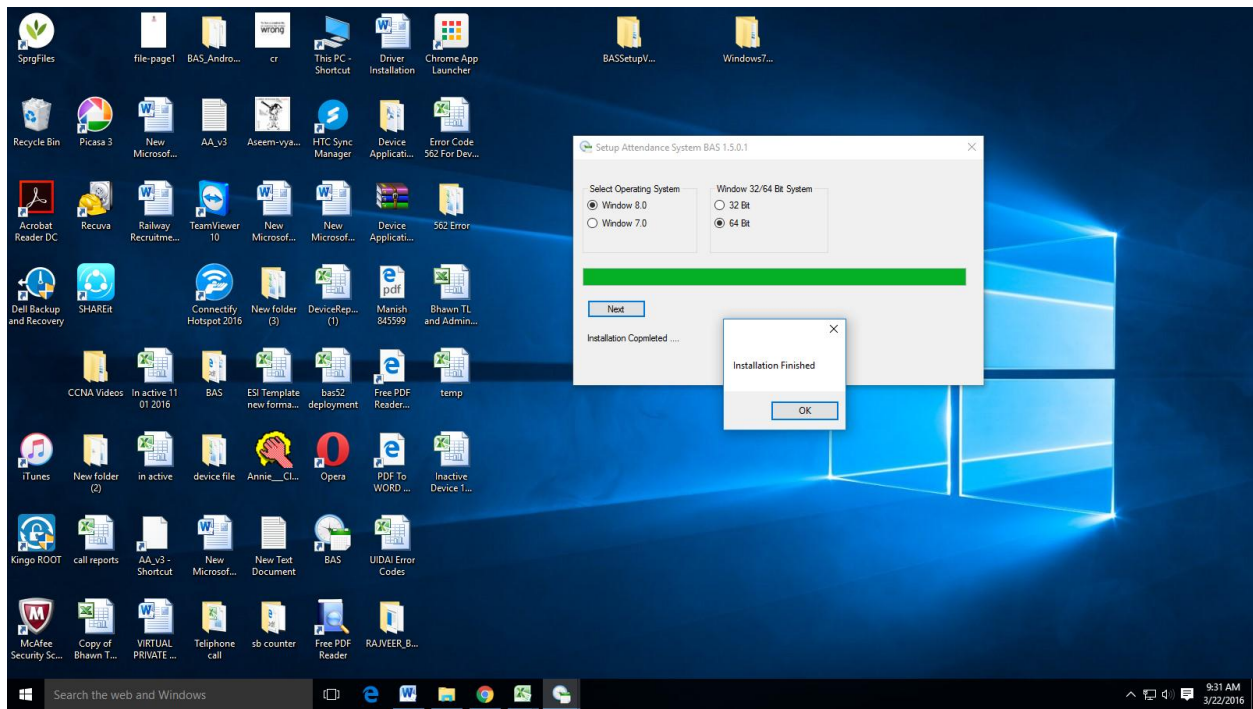
- Now right click on application file that you have selected according to window & now run that file as **RUN AS ADMINISTRATOR**.



- Now select the window & operating system.



5. After selection of window & OS please click on **NEXT** then the installation will finished.



BAS Device Registration at Attendance Portal:

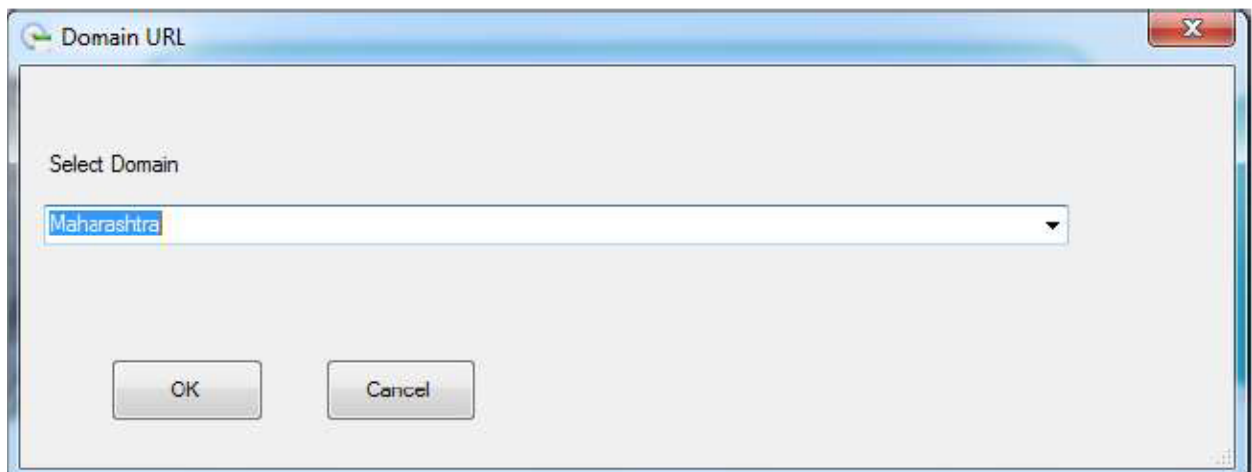
1. Log on to the Attendance Portal and generate the device activationcode. Please ensure that the following are addedon the portal:
 - a. Office Location
 - b. Biometric Admin
 - c. Device Location

Generate Activation code by selecting Office Location as well as Biometric Admin (who will authenticate the device at the device location)

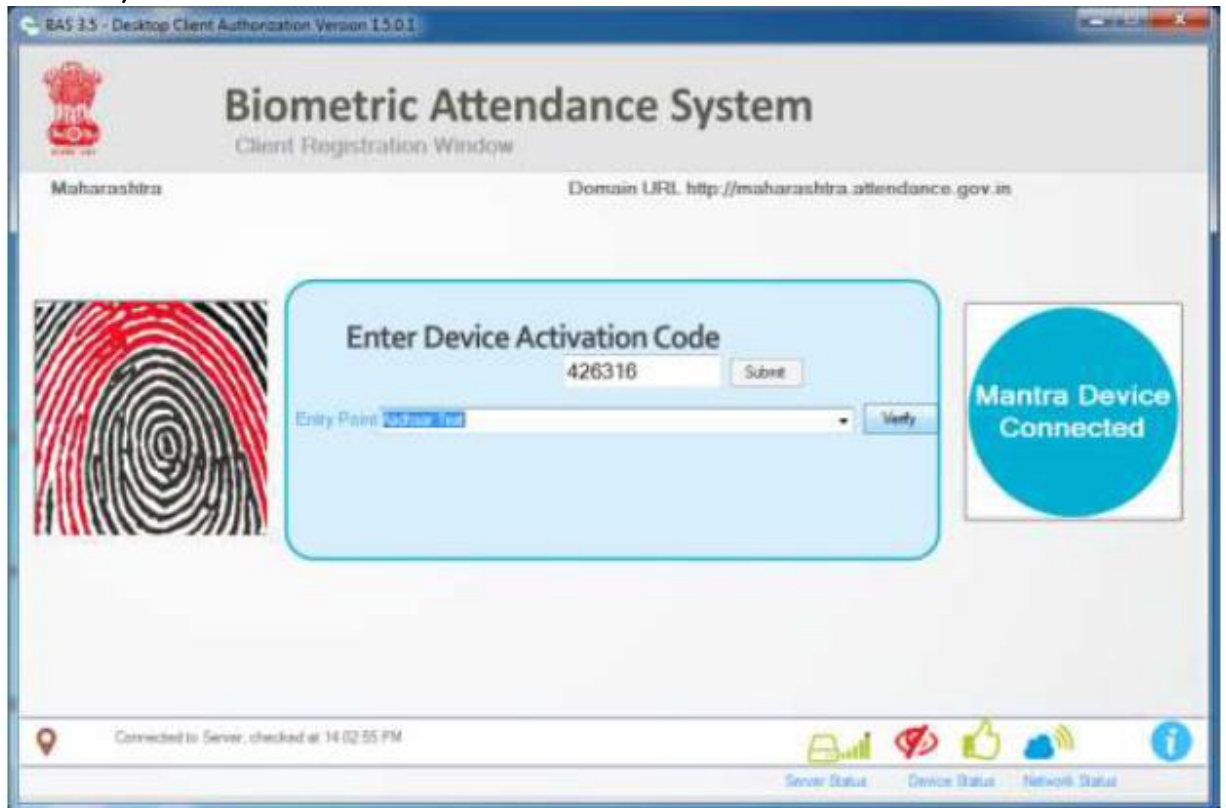
2. Connect your biometric fingerprint/Iris device to your computerand then double click on the BAS icon on the desktop to launch theapplication.



3. The application will open and launch the domain selectionwindow.
4. Select the domain and application name for which the applicationhas to be configured, if you are unsure of the domain please get intouch with the nodal officer/technical co-coordinator.

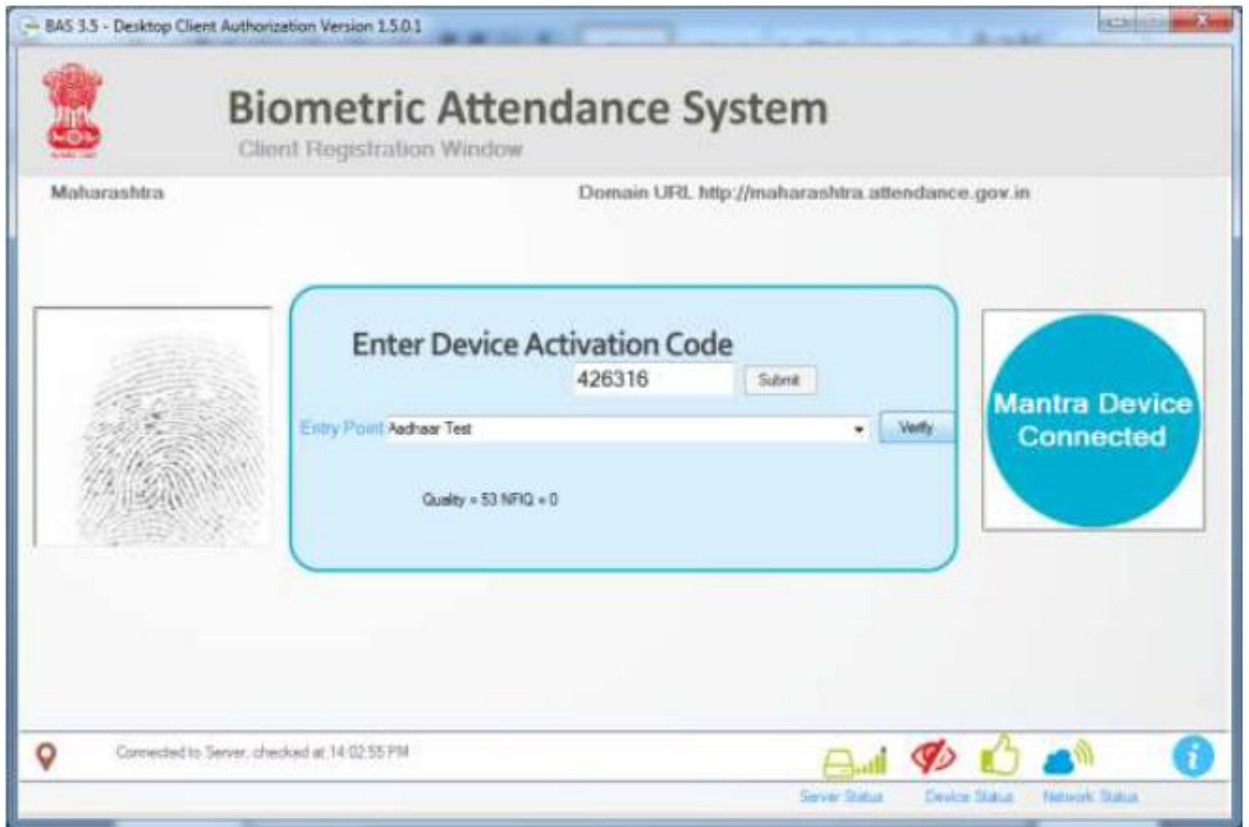


5. After the domain is selected, the application will ask for Activationcode. Enter the Device Activation code and press the Submitbutton. On validating the code, it will ask you to select an EntryPoint/Device Location (location where the device will be installed).

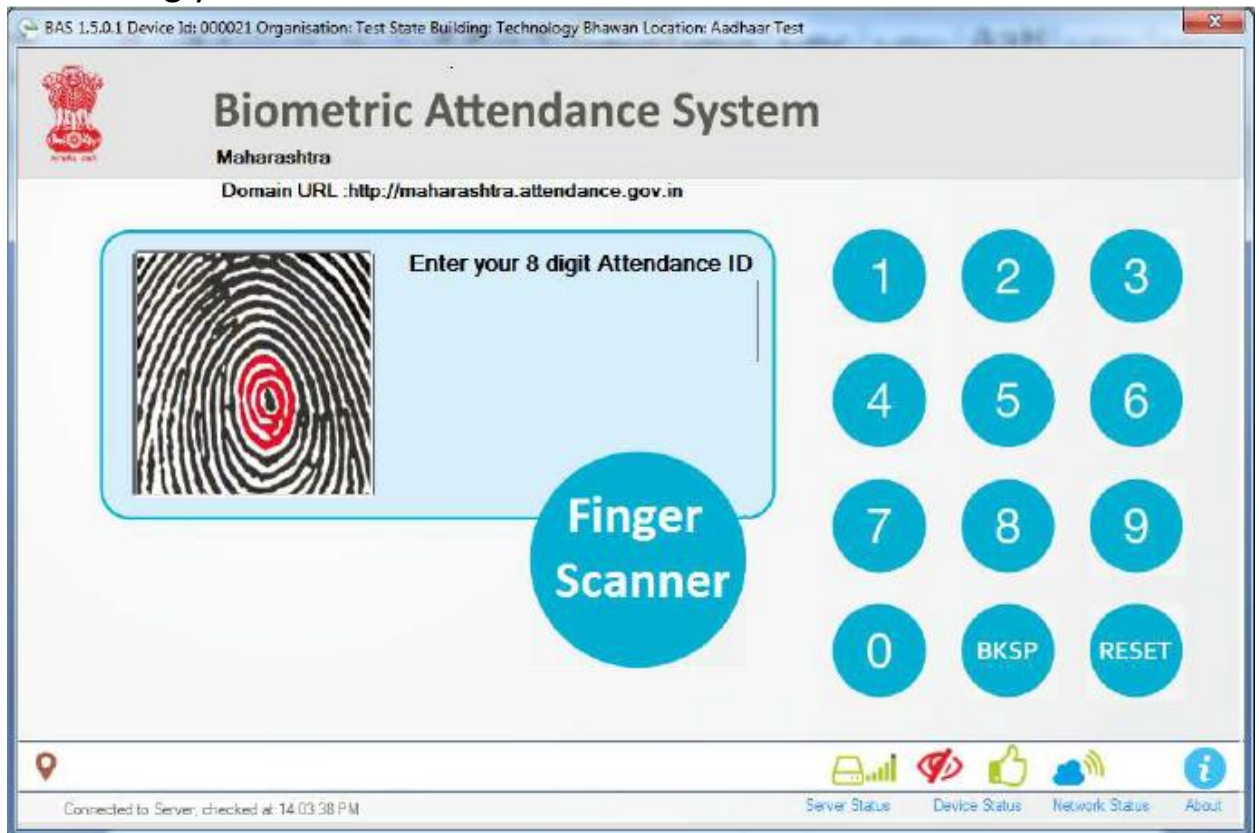


6. After Selecting the Entry Point, hit the verify button and provide your biometric for authentication. Only successful authentication

will activate the client.



7. After the client is authorized, restart the computer and you can use it formarking your attendance.



For BAS Device support e-mail: bas-monitor@gov.in

Contact Number: 011-24305997

For Attendance Portal support e-mail: helpdesk-attendance@gov.in

Contact Number: 011-24305050